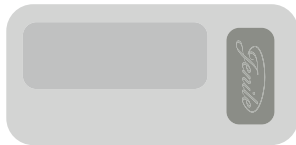




# DOORBELL SP20

## INSTRUCTION MANUAL

Specially designed for deaf and hearing impaired people.





All your products are already connected to each other.

# Summary :

- 4** : The contents of your package
- 5-6** : Doorbell SP20

# The contents of your package



(A)



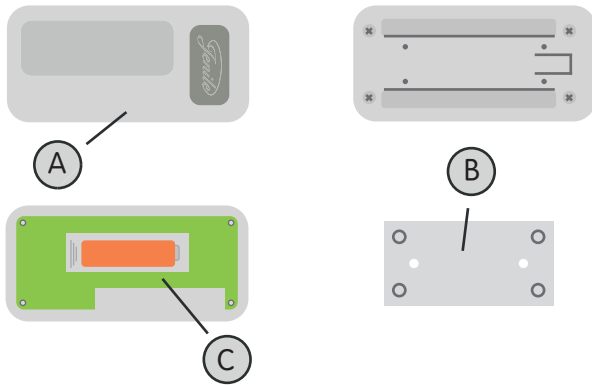
(B)



(C)

- (A) - Doorbell
- (B) - Battery 23A 12V
- (C) - Manual instruction in english

# Doorbell SP20



(A) - Doorbell

(B) - Bracket fixing

(C) - Battery 23A 12V

## Technical Specifications

Dimensions (height x width x depth): 53x34x20mm

Color : white

Weight : 20g

Power supply : battery included 23A 12V

Autonomy : 1 year

Transmission frequency : 433,33 Mhz

2 years guarantee

## Installation



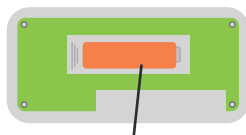
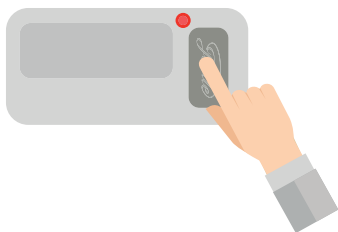
This button is fixed to the wall near the door, with screws and (B).

## Working principle

A signal system is composed of at least one transmitter and one receiver. When a person presses the bell button, the signal is converted into radio-frequency pulses. Those radio-frequency pulses (433 Mhz) are transmitted wireless to the flash receivers or to the Jenile vibrators. Then, they flash/vibrate in green.

## Use

Whether your doorbell works correctly, you can see a red LED will light up when you press the doorbell. If this is not the case, it means that no more battery, so you must change (C)



(C) - Battery 23A 12V

## Settings

Your products are already connected to each other. If this is not the case, the connection is very simple, please look at the setting of the cube flash & Pocket vibrator.



[www.jenile.com](http://www.jenile.com)

