



Wireless smoke detector

INSTRUCTION MANUAL

Specially designed for deaf and hearing impaired people.





All your products are already connected to each other.

Summary :

- 4 :** The contents of your package
- 5-10 :** Wireless smoke detector

The contents of your package



(A)



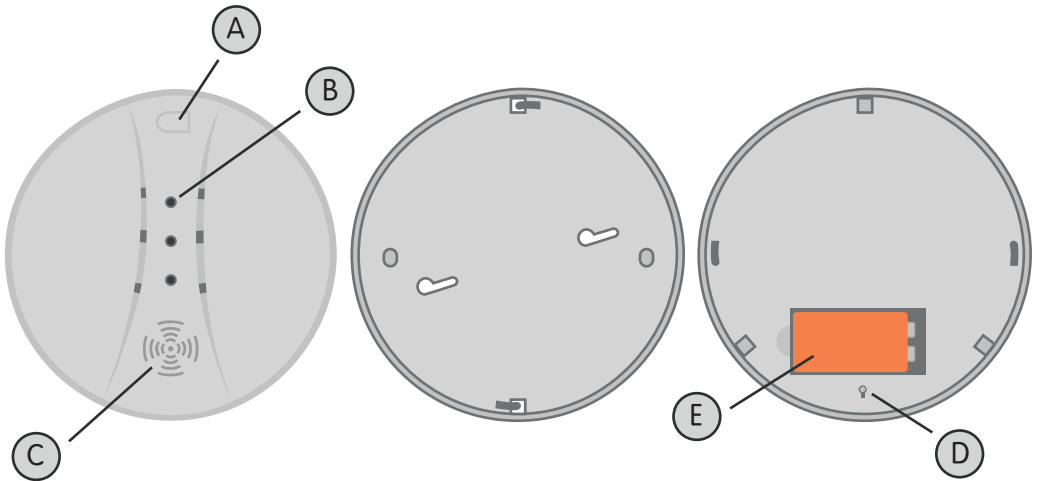
(B)



(C)

- (A) - Wireless smoke detector
- (B) - Battery
- (C) - Manual instruction in English

Wireless smoke detector



- (A) - Test button
- (B) - Functioning led light
- (C) - Sound output
- (D) - Base
- (E) - Battery

Technical Specifications

Wireless

Distance between each detector: 60 meters maximum in free fields

Quantity of connected detectors: 20 units max

Sound power: 85 dB

Power supply: alkaline 9V batteries

Transmission frequency: 433,33 Mhz

Temperatures: -10 to +50 C

Room humidity: 10 to 90%

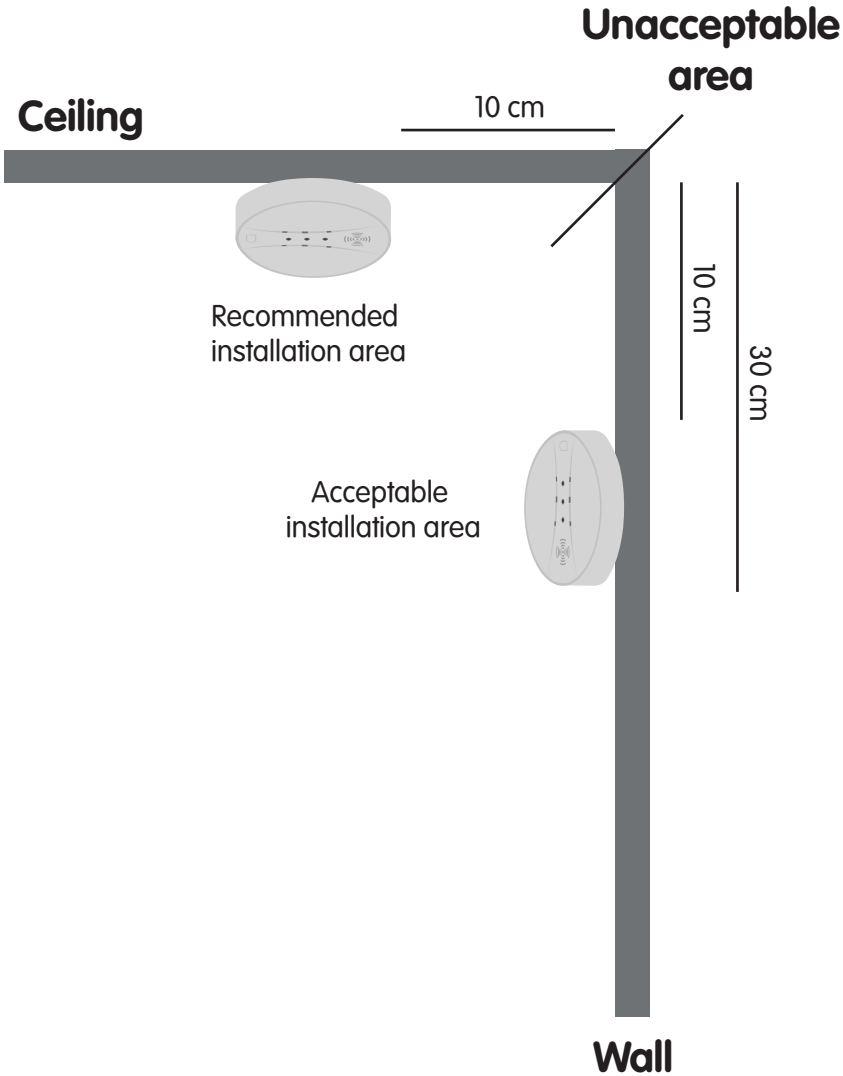
Size: 113*45mm

Batteries autonomy: 1 year

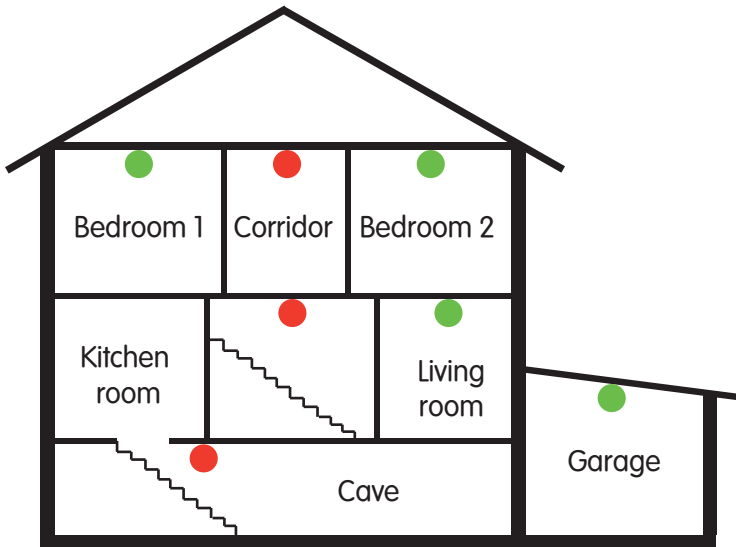
Reference standard: EN 14604-2005

Installation

Recommended locations to install the detector :



House

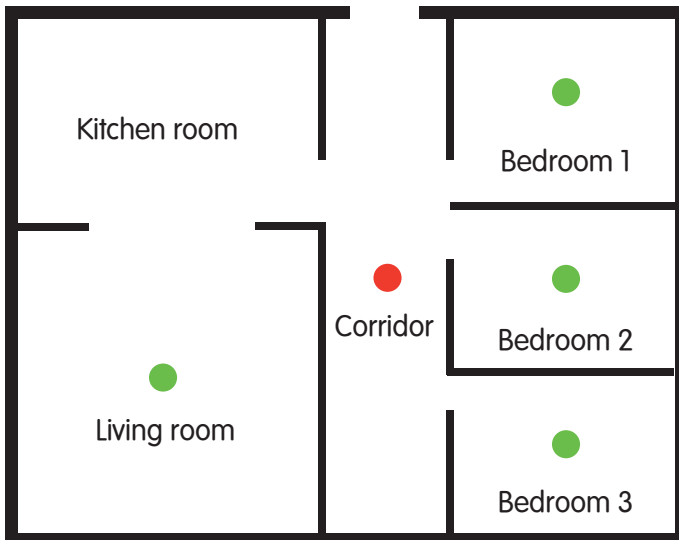


Smoke detectors for minimum protection



Smoke detectors for optimum protection

Apartment



Place a detector near bedrooms. If there are several places to sleep, place a detector in each area.

For maximum protection, place a detector in every bedroom.

Protect the stairs because stairs act like fireplaces.

If your house has several floors: it is recommended to install at least one detector on every floor

Protect rooms where smokers sleep as well as rooms where there are electrical appliances

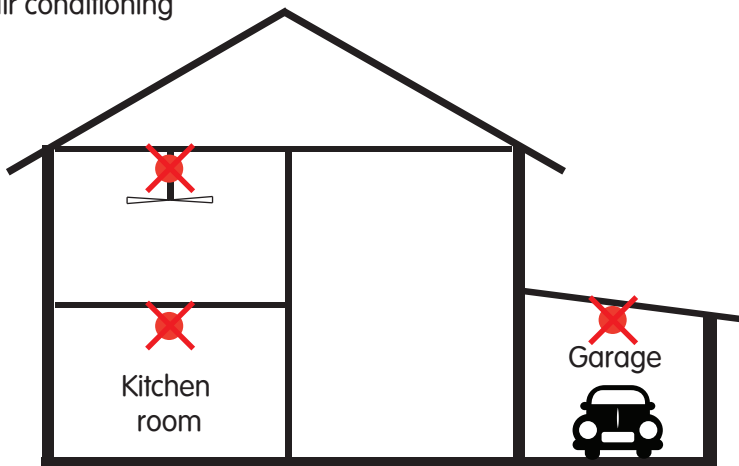
Heat, smoke and other combustion products rise towards the ceiling level and disperse horizontally. Therefore, place the detector in the center of the room to ensure the most efficient detection.

If you place a detector on the ceiling, make sure it is positioned at least 1 meter away from a wall.

You can either screw or tape your sensor. If you chose to screw it, place the plastic screw anchor into the holes, let the assembly plaque by the wall, then insert the screw to firmly fix the information carrier. The sensor is a compact device that must definitely not be opened. Put the battery into the compartment, turn clockwise, then slightly press on the test button to check if sensor properly works.

DO NOT PLACE THE SENSOR:

into the kitchen a garage (if you put your car there) in front of a window, a heater's air duct or air conditioning



At the highest spot of an attic room

In places where temperature can drop under 5C (ou 41F) or exceed 45C (113F)

Close to a steam or dust source, in a dirty or insect infested room.

Tests

Following installation, the sensor is automatically linked to Jenile's flashes and vibrators systems. Warning: pressing too long on CBM Cube plug will disconnect it. A LED should blink every 45 seconds. When sensing smoke, sensor will turn on until air is clean again. Press on test button to activate the alarm: the LED quickly blinks and sends a signal to wireless receivers of Jenile's flashes and vibrators. We recommend you to do one test per week in order to insure sensor's fiability.

Usage warning

(1) Clean the sensor using a soft brush once every six months to insure the product's proper functioning. Do not forget to take out the battery before cleaning.

(2) For several reasons, please acknowledge environmental conditions changes. One environment change may have repercussions on the product's performance. We suggest to our customer to take every necessary precaution for their family's and accommodations safety.

IDENTIFY EMERGENCY EXITS AND TEST THEM

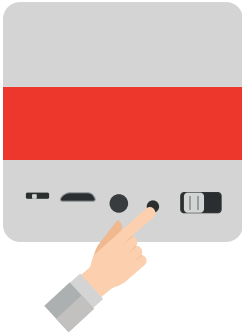
- Identify cautiously your accommodation in order to implement 2 potential emergency exits for each room. A fire escape or a ladder may be necessary in a multiple floor accommodation.
- Let every family member acknowledge the evacuation plan, as well as what do to in case of a fire emergency.
- Decide on a location outside the accommodation where all the family can gather in case of fire spreading.
- Accustom every single-family member to Jenile's flashes and vibrators corresponding to the smoke detector / alarm sensors, and train yourself to evacuate the accommodation in order to be prepared in case of fire.
- Identify the children bedrooms by putting a reflective sticker to the windows in order to be spotted easily by fireman in case of intervention at nighttime.

INSTRUCTIONS IN CASE OF ALARM

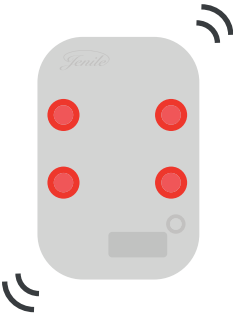
Leave immediately the accommodation. Do not waste your time putting on clothes or trying to gather some valuable items of yours. During evacuation, do not open a door if you spot some smoke going out through the door frame. If you feel like it is safe, firstly put your shoulder on the door then open it slowly while being ready to slamming it if any heat of smoke appears. Duck if air is smoke-filled and slowly breath through a damp fabric if possible. Ask your neighbours to call for emergency. Do not go back inside until the fireman authorised you to do so.

Signals and colors

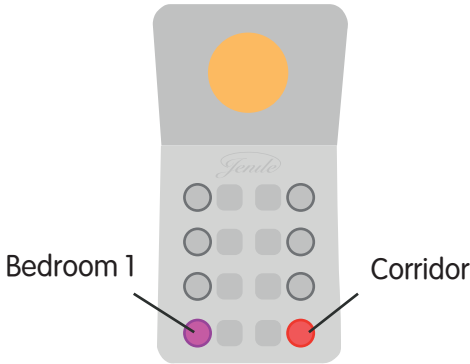
The Smoke Detector DDF14 can be used with all the receivers from the Jenile range.



If you need to be alerted to the smoke detector, the cube, the flash plug, will turn red.



The pocket vibrator has 3 vibrations with 5 repetitions



If you choose to equip yourself with several smoke detectors you can also differentiate the alerts thanks to the fixed flash 8 diodes



www.jenile.com



CE