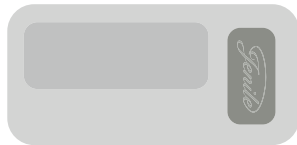




DOORBELL SP14

INSTRUCTION MANUAL

Specially designed for deaf and hearing impaired people.



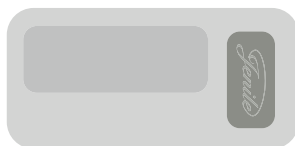


All your products are already connected to each other.

Summary :

- 4** : The contents of your package
- 5-6** : Doorbell SP14

The contents of your package



(A)



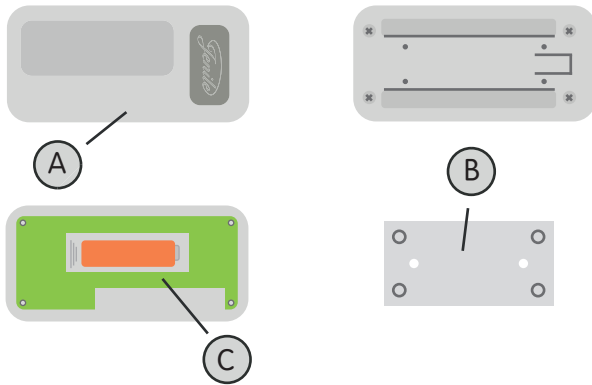
(B)



(C)

- (A) - Doorbell
- (B) - Battery 23A 12V
- (C) - Manual instruction in english

Doorbell SP14



(A) - Doorbell

(B) - Bracket fixing

(C) - Battery 23A 12V

Technical Specifications

Dimensions (height x width x depth): 53x34x20mm

Color: white

Weight: 20g

Power supply: battery included 23A 12V

Autonomy: 1 year

Transmission frequency: 433,33 Mhz

2 years guarantee

Installation



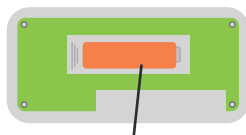
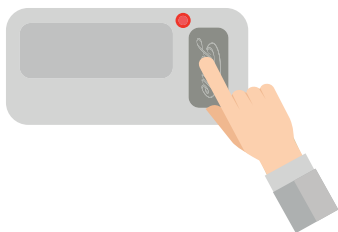
This button is fixed to the wall near the door, with screws and (B).

Working principle

A signal system is composed of at least one transmitter and one receiver. When a person presses the bell button, the signal is converted into radio-frequency pulses. Those radio-frequency pulses (433 Mhz) are transmitted wireless to the flash receivers or to the Jenile vibrators. Then, they flash/vibrate in green.

Use

Whether your doorbell works correctly, you can see a red LED will light up when you press the doorbell. If this is not the case, it means that no more battery, so you must change (C)



(C) - Battery 23A 12V

Settings

Your products are already connected to each other. If this is not the case, the connection is very simple, please look at the setting of the cube flash & Pocket vibrator.



www.jenile.com

